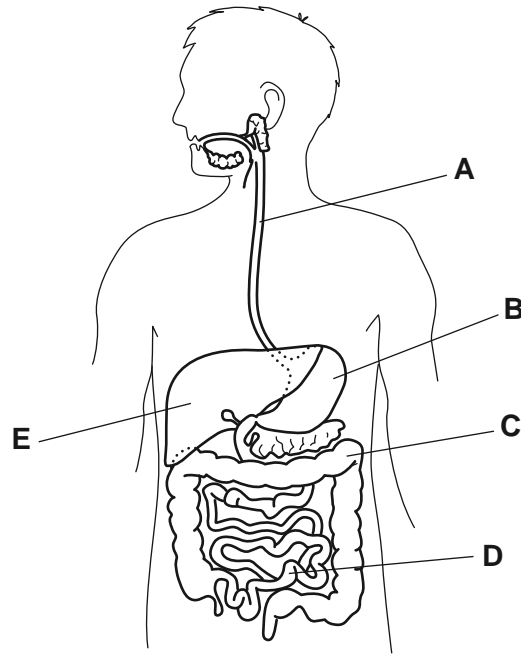


- 1 Look at the diagram. It shows part of the alimentary canal.



- (a) Where is acid added to the alimentary canal?

Circle the correct answer.

A

B

C

D

E

[1]

- (b) Where is digested food absorbed from the alimentary canal into the blood?

Circle the correct answer.

A

B

C

D

E

[1]

- (c) Look at the part labelled **A** on the diagram.

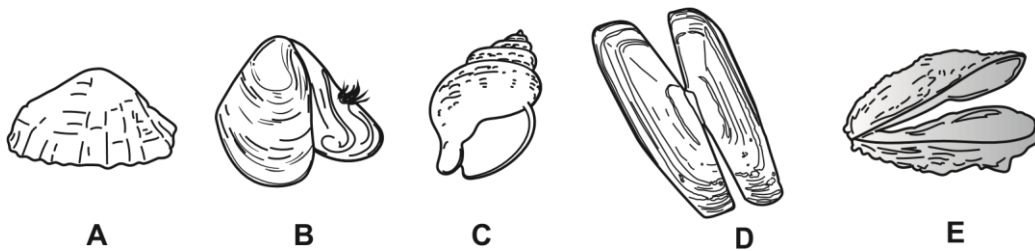
Write down the names of the **two** parts of the alimentary canal that part **A** connects.

and

[1]

.....

- 2 The diagram shows the shells of five molluscs labelled **A**, **B**, **C**, **D** and **E**.



NOT TO SCALE

2

Use the key to identify the scientific names of the five molluscs.

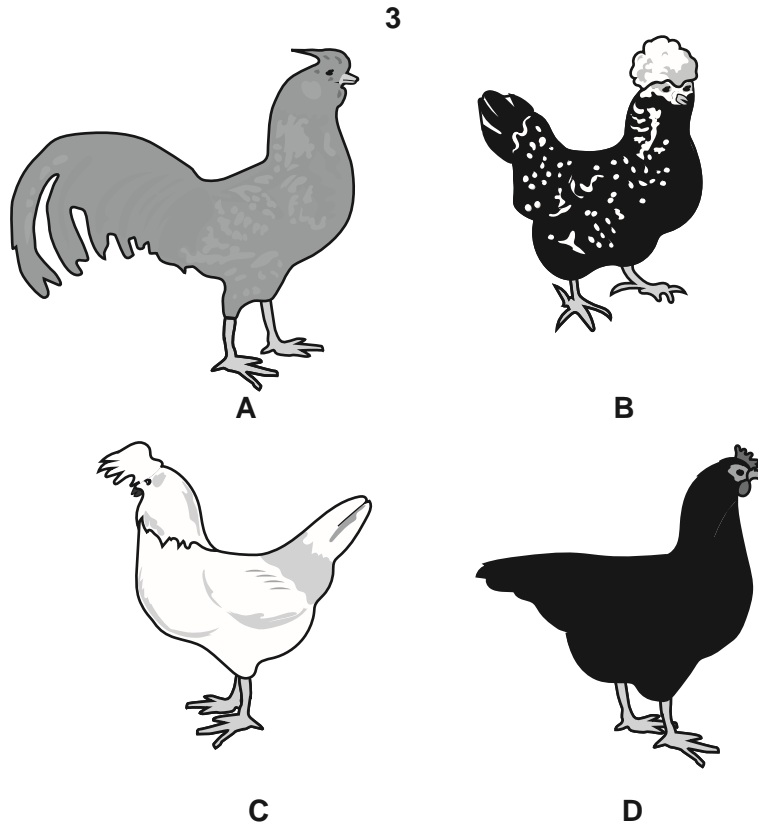
- | | | |
|---|-------------------------------------------------------------------------------------|---------------------------------------------------------|
| 1 | shell consists of one single part
shell consists of two parts | go to 2
go to 3 |
| 2 | shell is spiral-shaped
shell is not spiral-shaped | mollusc is <i>Buccinum</i>
mollusc is <i>Patella</i> |
| 3 | shell is long and thin
shell is not long and thin | mollusc is <i>Ensis</i>
go to 4 |
| 4 | shell has a small tuft of hairs
shell does not have a small tuft of hairs | mollusc is <i>Mytilus</i>
mollusc is <i>Ostrea</i> |

Write your answers in the table.

scientific name	letter
<i>Buccinum</i>	
<i>Ensis</i>	
<i>Mytilus</i>	
<i>Ostrea</i>	
<i>Patella</i>	

[2]

- 7** Look at the diagram of four different varieties of the same species of chicken.



A farmer uses selective breeding to produce a new variety of chicken.

This new variety of chicken must be black with white spots and have a large tail.

Describe **two** stages in the production of this new variety of chicken.

1

.....

.....

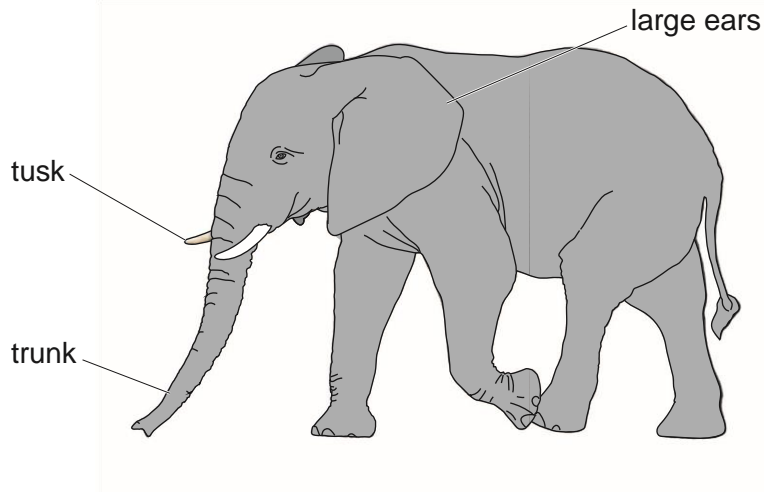
2

.....

.....

8 Look at the picture of an elephant.

[2]



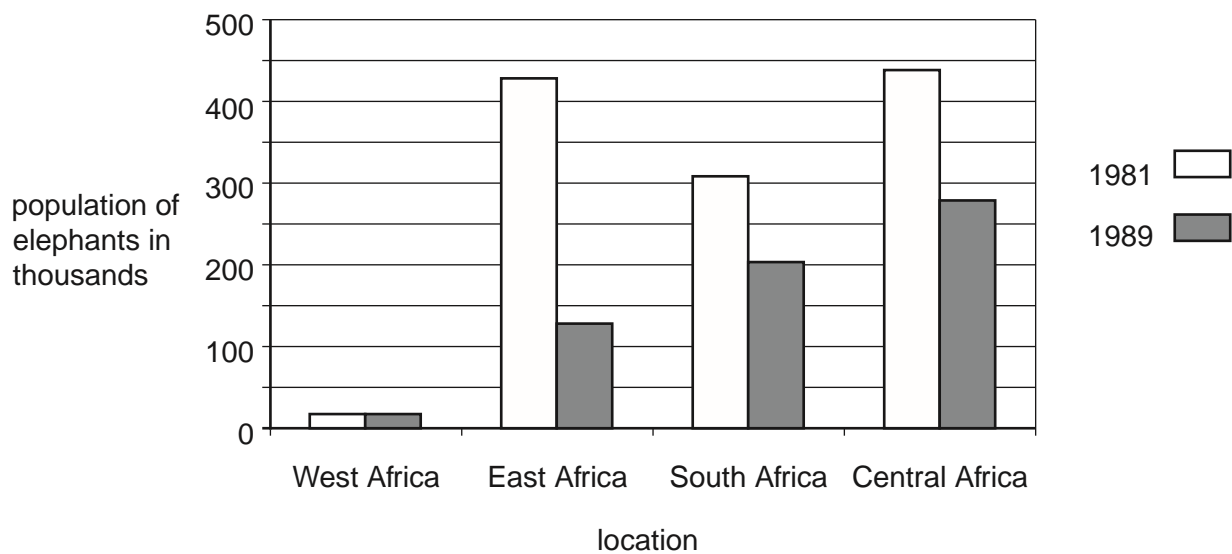
(a) Elephants are adapted to survive.

Draw a line to match each **adaptation** with the **reason** why it helps the elephant survive.

adaptation	reason
large ears	pull grass from ground
trunk	keep elephant cool
tusks	used to fight other elephants

[1]

(b) The chart shows the population of elephants in different parts of Africa in 1981 and 1989.



(i) In which part of Africa was the **largest** decrease in the population of elephants between 1981 and 1989?

[1]

(ii) Humans caused the changes in elephant populations between 1981 and 1989.

Suggest **two** ways humans caused these changes.

1

.....

.....

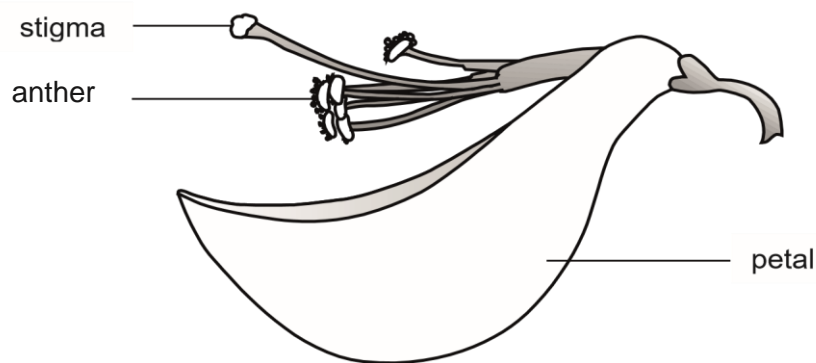
2

.....

.....

[2]

9 The diagram shows part of a flower that is pollinated by bees.



The male and female parts of the flower are protected by petals.

(a) Write down **one** other function of the petals.

[1]

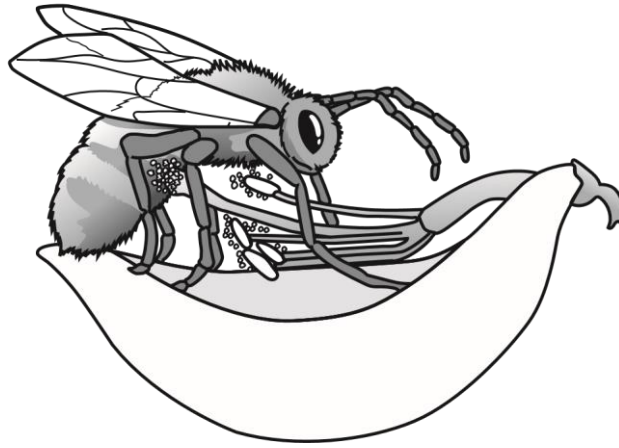
.....

(b) Write down **one** function of the anther.

[1]

.....

(c) The diagram shows a bee pollinating this flower.



(i) Describe what happens **during** pollination.

[1]

.....

(ii) Describe what happens **after** pollination.

.....

[2]

.....